

INTRODUCING

THE NEXT EVOLUTION OF VOICE COMMUNICATIONS



Evolution UC offers state of the art VoIP telephony features in a highly intuitive, low maintenance phone system. With the **Evolution UC** small businesses, entrepreneurs, and sales professionals can have a communications system that functions similar to the million-dollar PBX systems FORTUNE 500 companies use. You get big business features that don't require a computer degree to use!



www.intuitivetechnology.com

Applications available for



evolution

Unified Communications

EVOLUTION UC

Introducing the next generation of voice communications. The **Evolution PBX** offers state of the art IP telephony features in a highly intuitive, low maintenance phone system. With the **Evolution PBX** small businesses, entrepreneurs, and sales professionals can have a communications system that functions much like the million-dollar PBX systems FORTUNE 500 companies use. You get big business features that don't require a computer degree to use!

Designed to enable a small business without an IT staff to benefit from the recent wave of telephony enhancements, **Evolution PBX** packs features commonly available in high end systems in a simplified easy to use package. The days of calling your telecommunications supplier to enable another extension on your PBX are gone. With **Evolution PBX** you simply plug your phone into a standard network jack and let the system do the rest. All the configuration is done through an easy to use web interface.

Good communication with customers and suppliers is critical. Let us make it your reality.

Don't be left behind by the evolution of telephony through the power of Voice over Internet Protocol. Contact Intuitive Voice Technology for a free quote of **Evolution PBX** today.



Features

Professional Features

- Multivendor Phone Options
- Unlimited Auto Attendants
- Unlimited Voicemail Boxes
- Dial by Name Directories
- Employee and Department Extensions
- Unlimited Extension Groups
- Music and Messages on Hold
- Voicemail to Email
- Call Parking
- Park on Extension **
- Integrated Paging Conference Server
- Call Recording (Automatic and On Demand)
- Call Barge
- Call Presence (BLF)
- Call Forwarding
- Operator Console
- Phone Auto Provisioning
- Voicemail Bypass
- Voicemail Blast Groups
- Voicemail Call Back
- Inbound Call Description
- Remote Phones
- Custom Caller ID
- VoIP, Analog, T1, PRI Phone Lines
- Linked Server Support
- Outbound Calling Permissions
- BYO VoIP Provider
- Call Reporting
- iPhone, Android, Web User Interface

Call Center Features

- Fast Pass Queues
- Hot Desk Agents
- Idle Codes
- Call Center Reports
- Screen Pops
- Click to Dial
- Skills Based Routing
- Call Whispers
- Queue Based MOH
- Queue Based Hold
- Announcements
- Inbound Call Description
- Inbound Call Whisper
- Caller Position Announcements
- Geographic Call Routing
- Real-time Call Monitoring

Platinum Features

- Press or Say Auto Attendants **
- Queues
- Call Forwarding
- Call Screening
- Multiple Outbound Caller ID **
- Fax to email
- Email to Fax
- Directed Call Pickup
- Speed Dial Numbers
- Call Tagging **
- Call Flip (Desk <-> Cell) **
- Time of Day Routing
- Video Calling
- Video Conferencing **
- Visual Voicemail
- Unified Messaging

Enterprise Features

- Multi-Nodal Architecture
- Single Management Interface
- Automatic Site Linking
- Universal Queueing
- Hot Failover Extensions
- Remote Site Trunking

Support Features

- Enterprise Monitoring **
- Email Notifications **
- System Uptime Reports **
- VoIP Quality Monitoring **
- Process Level Availability **
- Live NOC Support **
- Offsite Backups **
- Disaster Recovery Services **
- 24/7 Outage Services
- 8-5 Configuration Assistance

Security Features

- International Call Pattern Detection **
- Integrated ACL Firewall **
- HTTPS **
- SRTP, SIP over TLS **
- Intrusion Detection

** Feature requires Evolution Version 5.0

Quick Facts

Simple

Manage one or up to 250 remote sites through an easy to use intuitive management interface.

Mobile

Setup, manage, access or even make and receive calls from your smart phone or tablet, wherever you are.

Reliable

Built using one of the most stable operating systems available. Evolution UC will deliver unparalleled reliability.

Complete

Enterprise class phone system including fax, video, and VoIP.



How do I purchase Evolution UC?

Contact sales today to customize a package to meet your needs. You'll get personalized professional service from our highly trained staff.

Plug & Ring phones

Purchase competitively priced IP phones designed specifically for VoIP business phone systems. Simply plug your phones into your Internet router and make calls instantly.

Get more information at:

www.intuitivetechnology.com
or contact our sales department today at
888-587-5750

POLYCOM ENTRY-LEVEL



HDvoice

\$159.00 - 300
\$179.00 - 310

SoundPoint VVX 300/310

- Application Targets: Common Areas, Warehouse, Cubicle, Call Center
- Six Programmable Line Appearances or On Screen BLF
- Polycom HD Voice Technology
- Backlit 8 Level Grayscale Graphical LCD Display
- Dual 10/100/1000 Ethernet Ports with PoE Support
- Full-duplex Speakerphone with Acoustic Clarity Technology
- Dedicated RJ-9 Headset Port
- VLAN, QOS, SIP Capable
- VVX 310 Include 10/100/100 Network Ports

SoundPoint VVX 335

- Application Targets: Common Areas, Warehouse, Cubicle, Call Center
- Two Line Appearances
- Polycom Acoustic Clarity Technology & HD Voice
- 102x33-pixel Graphical Monochrome Display
- Integrated 802.3af PoE Support
- Dual 10/100 Ethernet Ports
- Dedicated RJ-9 Headset Port Compatible with Wideband HD Headsets
- Full-duplex Speakerphone
- XHTML Micro-browser for Web Applications



HDvoice

\$159.00

POLYCOM MAINSTREAM



HDvoice

\$229.00 - 400
\$249.00 - 410

SoundPoint VVX 400/410

- Application Targets: Cubicle, Call Center
- 12 Programmable Line Appearances or On Screen BLF
- Polycom HD Voice Technology
- Backlit 3.5" Color LCD (320 x 240) Resolution
- Dual 10/100 Ethernet Ports with PoE Support
- Full-duplex Speakerphone with Acoustic Clarity Technology
- Dedicated RJ-9 Headset Port
- VLAN, QOS, SIP Capable
- VVX 410 includes 10/100/1000 Network Ports

SoundPoint IP 450

- Application Targets: Cubicle, Call Center
- Three Line Appearances
- High-resolution Backlit LCD
- Built-in XHTML Microbrowser
- Polycom HD Voice Technology, Acoustic Clarity Technology
- Backlit 256 x 116-pixel multi-layer, grayscale graphical LCD
- Integrated IEEE 802.3af Power over Ethernet
- Two port 10/100 Ethernet Switch
- Dedicated RJ-9 Headset Port



HDvoice

\$229.00

SoundPoint IP 550

- Application Targets: Cubicle, Call Center
- Four Line Appearances
- Backlit 320 x 160-pixel Graphical Grayscale LCD
- XHTML Micro-browser for Web Applications
- Integrated IEEE 802.3af Power over Ethernet
- Two port 10/100 Ethernet Switch
- Dedicated RJ-9 Headset Port



HDvoice

\$279.00

POLYCOM PERFORMANCE



HDvoice

\$279.00

SoundPoint VVX 500

- Application Targets: Manager's, Professional's Office
- 12 Programmable Line Appearances or On Screen BLF
- Polycom HD Voice Technology
- Backlit 3.5" Color Touch Screen LCD Display
- Optional VVX Video Camera Support
- WebKit Enabled Full Browser
- HTML5, CSS, SSL Security, and JavaScript
- Full-duplex Speakerphone with Acoustic Clarity Technology
- Dedicated RJ-9 Headset Port
- VLAN, QOS, SIP Capable
- Dual 10/100/1000 Ethernet Ports with PoE Support

Compatible with the following major brands of phones



HDvoice

\$369.00

SoundPoint VVX 600

- Application Targets: Executive Office
- 16 Programmable Line Appearances or On Screen BLF
- Polycom HD Voice Technology
- Backlit 3.5" Color Touch Screen LCD Display
- Integrated Bluetooth 2.1 Headset Support
- Optional VVX Video Camera Support
- WebKit Enabled Full Browser
- HTML5, CSS, SSL Security, and JavaScript
- Full-duplex Speakerphone with Acoustic Clarity Technology
- Dedicated RJ-9 Headset Port
- VLAN, QOS, SIP Capable
- Dual 10/100/1000 Ethernet Ports with PoE Support



HDvoice

\$369.00

SoundPoint IP 650

- Application Targets: Executive Office
- Six Line Appearances
- Polycom HD Voice Technology, Acoustic Clarity
- Support of up to Three SoundPoint IP Expansion Modules
- Backlit 320 x 160-pixel Grayscale Graphical LCD
- XHTML Micro-browser for Web Applications
- Integrated IEEE 802.3af Power over Ethernet
- Two port 10/100 Ethernet Switch
- Dedicated RJ-9 Headset Port

ANDROID BASED PHONE



\$239.00

Grandstream Android GXP2200

- Application Targets: Managers, Executives
- Six Line Appearances
- Support Android Operating System 2.3 and Vast Number of 3rd Party Android Applications
- 480x272 pixel Capacitive Touch Screen TFT LCD
- Dual Switched 10/100/1000Mbps Ports with Integrated PoE
- HD Handset and Speakerphone
- Video Support

WIRELESS PHONE



\$225.00

Yealink W52P DECT Phone

- 28 Illuminated Bi-color Programmable Line Keys
- Expandable up to 3 Modules (adds up to 84 keys)
- Compatible with VVX Business Media Phones (VVX 300/400/500/600)
- Powered by the Host VVX Phone

POLYCOM EXPANSION



\$225.00

VVX Color Expansion Module

- Application Targets: Mobile Users
- Up to 4 Simultaneous Calls
- Up to 5 Handsets
- 11 Hours Talk Time
- 120 Hours Standby Time
- Handset Select for Receiving Call
- Handset and Number Select for Making Call
- Paging, Intercom, Auto answer Call Hold, Call Transfer
- Switching Between Calls

POLYCOM CONFERENCE



HDvoice

\$750.00

SoundStation IP 6000 Conference Phone

- White LED Backlight Display with Custom Intensity Control
- Room Coverage of 12 feet
- HD Quality Speakerphone

POLYCOM VIDEO



\$140.00

Polycom VVX 500 and 600 Camera

- Privacy Shutter
- Adjustable Tilt
- Plug and Play Setup
- H.263, H.264 Encoding
- 24-bit True Color
- Compatible with VVX 500 and VVX 600 Models



SERVERS



\$400.00

Evolution Appliance

- Up to 45+ Extensions (Minimum Specs)
- Dual Core 1.8 Ghz Intel Atom Processor
- 2GB RAM (Upgradable to 4GB)
- 120 GB Solid State Drive (Upgradable to 1TB)
- 10/100/1000 Network Port
- No Moving Parts
- 1 Year Warranty



\$600.00

Dell PowerEdge T110II

- Up to 60+ Extensions (Minimum Specs)
- Dual Core 2.6 Ghz Celeron Processor (Upgradable)
- 2GB RAM (Upgradable to 16GB)
- 500 GB SATA Drive (Upgradable to 4TB)
- 10/100/1000 Network Port
- RAID 1 Optional
- 4 PCIe Slots for Analog and T1 Hardware
- Dimensions 18.26 H x 7.45" W x 16.55" D
- 1 Year Warranty (Upgradable)



\$999.00 ■ (Price Varies)

Dell PowerEdge R210 II

- Up to 150+ Extensions (Minimum Specs)
- Dual Core 2.6 Ghz Pentium Processor (Upgradable)
- 4GB RAM (Upgradable to 16GB)
- 500GB SATA Drive (Upgradable to 4TB)
- 2 X 10/100/1000 Network Port
- RAID 1 Optional
- 1 PCIe x16 G2 slot for Analog and T1 Hardware
- Dimensions 1U 1.66" H x 17.09" W x 15.52" D
- 1 Year Warranty (Upgradable)

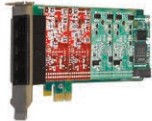


\$2499.00 ■ (Price Varies)

Dell PowerEdge 320/420

- Up to 300+ Extensions (Minimum Specs)
- Quad Core 2.2 Ghz Xeon Processor (Upgradable)
- 6GB RAM (Upgradable to 16GB)
- 2 X 1TB SATA Drive (Upgradable to 4TB) RAID 1
- 2 X 10/100/1000 Network Port
- 2 Half Length PCIe slots for Analog and T1 Hardware
- Dual Power Supplies (Optional)
- Dimensions 1U 1.66" H x 17.09" W x 15.52" D
- 1 Year Warranty (Upgradable)

DIGITAL AND ANALOG CARDS



\$699.00

Digium 4 Port Analog FXO

- 4 Analog FXO Ports
- DSP Based Echo Cancellation
- Loop Start or Kewl Start Signaling
- PCI or PCI Express



\$999.00

Digium 8 Port Analog FXO

- 4 Analog FXO Ports
- DSP Based Echo Cancellation
- Loop Start or Kewl Start Signaling
- PCI or PCI Express



\$544.00

Digium Single T1/PRI/E1

- Up to 24 (T1/J1) or 30 (E1) simultaneous calls
- PCI or PCI Express
- Optional DSP Based Echo Cancellation
- 5 year warranty



\$1799.00

Digium 24 Port Analog FXO

- 24 Analog FXO Ports
- DSP Based Echo Cancellation
- Loop Start or Kewl Start Signaling
- PCI or PCI Express



\$850.00

Digium Dual T1/PRI/E1

- 2 X Up to 24 (T1/J1) or 30 (E1) simultaneous calls
- PCI or PCI Express
- Optional DSP Based Echo Cancellation
- 5 year warranty



\$1450.00

Digium Quad T1/PRI/E1

- 4 X Up to 24 (T1/J1) or 30 (E1) simultaneous calls
- PCI or PCI Express
- Optional DSP Based Echo Cancellation
- 5 year warranty

DIGITAL AND ANALOG GATEWAYS



\$1299.00

Digium Single - T1/PRI/E1 Gateway

- Up to 24 (T1/J1) or 30 (E1) simultaneous calls
- 1 10/100/1000 Ethernet
- Hardened
- Cost effective
- Low power consumption
- Solid state (no moving parts)
- DSP Based Echo Cancellation
- 1 Year Warranty



\$2199.00

Digium Dual - T1/PRI/E1

- 2 X Up to 24 (T1/J1) or 30 (E1) calls
- 1 10/100/1000 Ethernet
- Hardened
- Cost effective
- Low power consumption
- Solid state (no moving parts)
- DSP Based Echo Cancellation
- 1 Year Warranty



\$3199.00

Digium Quad - T1/PRI/E1

- 2 X Up to 24 (T1/J1) or 30 (E1) calls
- 1 10/100/1000 Ethernet
- Hardened
- Cost effective
- Low power consumption
- Solid state (no moving parts)
- DSP Based Echo Cancellation
- 1 Year Warranty



\$349.00

Grandstream Quad FXO Port

- 4 POTS Ports
- Two 10/100 Ethernet Ports (switched or routed)
- G.168 - echo cancellation
- T.38 Compliant
- 1 Year Warranty



\$449.00

Grandstream 8 FXO Port

- 8 POTS Ports
- Two 10/100 Ethernet Ports (switched or routed)
- G.168 - echo cancellation
- T.38 Compliant
- 1 Year Warranty



\$59.99

Cisco Dual FXS

- 2 Analog Phone/Fax Ports
- 2 10/100 Ethernet Ports
- T.38 Fax Support
- G.711 a/u law, G.723, G.726, G.729 Codec
- 1 Year Warranty



\$349.00

Grandstream Quad FXS Port

- 8 RJ 11 FXS ports
- Two 10/100 Ethernet Ports (switched or routed)
- G.168 - echo cancellation
- T.38 Compliant
- 1 Year Warranty



\$999.00

Grandstream 24 FXS Port

- 24 RJ 11 FXS ports
- Two 10/100 Ethernet Ports (switched or routed)
- G.168 - echo cancellation
- T.38 Compliant
- 1 Year Warranty



applications available for



Business Case

Today, business executives understand that (VoIP-based) solutions operating over a converged voice-and-data network are the best choice to replace aging telephone systems. But these changes often impact nearly every aspect of their business the flexibility to meet demanding requirements is essential. New features such as site to site routing are often key motivators to moving to VoIP systems however the complexity of most systems to setup and administer multiple sites is taxing on an IT infrastructure and often times leave systems partially deployed or unmanageable.

Cost savings are an important part of the decision, but Evolution UC Enterprise Edition covers a broad range of resulting financial and strategic improvements, including:

- Highly effective communication
- Increased user and IT productivity
- Greater operational resilience
- Better customer service

ROI Factors

- Reduced hardware, software and maintenance costs
- Reduced management costs
- Improved line usage
- Highly redundant reliability

Productivity Enhancements

Other factors can increase productivity for end-users, IT staff, or the organization as a whole:

- Reduced "telephone tag"
- Anytime, anywhere access to telephony features for mobile workers
- More efficient, easier-to-use call-handling features
- Unified messaging
- Integration with core business applications
- Less travel to remote sites
- Simplified management of converged voice and data network
- Fewer support staff required, even with network growth
- Reduced training requirements
- Increased call-center call volumes
- Improved customer satisfaction from better call handling and responsiveness
- Increased call-center productivity through voice calls, e-mail, and interactive Web sessions
- Selected data and applications can be presented on the phone displays, which benefits employees without computer access.

Deployment Scenarios

The Evolution UC Enterprise Edition can help you take full advantage of your existing IP network to deliver new communications services. Whether implemented individually or in combination, the products help you reap the highest possible productivity and cost-savings benefits to achieve a fast, measurable ROI in a variety of deployment scenarios, including:

- **Greenfield:** A new telephone system is installed to serve a new or relocating facility
- **Centrex Replacement:** The recurring costs of an outsourced service are replaced by an internally owned telephone system
- **Multisite Centralized Call Processing:** Replacing separate systems within a company or region with our network services solution presents significant potential for reducing costs, consolidating redundant infrastructure, and standardizing
- **Single-site PBX and ACD Replacement:** The need to replace aging or obsolete voice infrastructure often begins the migration to IPC
- **IP Telephony:** Our products can integrate with existing PBX and key systems to help you migrate gradually to IP telephony while protecting current technology investment

Additional Benefits

Other advantages derived from deployment come in the areas of unified messaging, rich-media conferencing, call-center productivity, and network management.

Single Administration Interface: Our robust administration interface allows a single point to administer all of your sites and simplifies integration between all of your systems.

Unified Messaging: With unified messaging applications, Evolution UC Enterprise subscriber moves, adds, and changes activity can be performed in one place, eliminating redundant tasks and saving the typical cost of US\$75 to US\$100 per change. User features, such as the ability to change passwords on a website instead of calling the help desk, can reduce technical support costs.

Rich-Media Conferencing: Videoconferences and collaborative Web sessions are growing in importance because they promote collaboration and offer an improved user experience. But the hard benefits are substantial as well: Sage Research found an average reduction of 30% in conferencing expenses (with in-house conferencing) and \$1700 monthly on travel avoidance by using rich-media conferencing. It also reported that unified communications enabled employees to save an average of 55 minutes per day, and that conferencing, soft phones, and other unified communications applications significantly reduce costs for travel, long-distance, and non-integrated video conference services.

Call Center Productivity: A study conducted by Sage Research showed that among customers using IP communications in call centers:

- 74% reported generating an additional \$5000 or more per month per sales agent
- Nearly 50% reported agents handled an average of 30 or more additional calls per day
- 67% reported being able to assist an additional ten or more customers per day
- 91% reported completion of an additional 10 or more outbound calls per day, per agent

Network Management: Many companies have found that an integrated solution improves the productivity of network staff and accommodates network growth with the same staffing levels. Installation costs for new systems drop by 40% to 60% because a company only needs to purchase and install one infrastructure instead of two. And a Yankee Group study showed that VoIP systems were about 22% less expensive to operate than circuit-switched networks.

Introducing The Next Generation Of Voice Communications. Evolution UC offers state of the art IP telephony features in a highly intuitive, low maintenance phone system. With the Evolution UC small businesses, entrepreneurs, and sales professionals can have a communications system that functions similar to the million-dollar phone systems FORTUNE 500 companies use. You get big business features that don't require a computer degree to use!

APPLIANCE HIGHLIGHTS

- Supports up to 45 Extensions
- Intuitive User Interface
- Supports Video Calling
- Advanced Receptionist Console
- Proximity Detection
- Auto Attendant
- Remote Extensions
- Cell Phone Extensions
- Supports VoIP Phone Lines
- Analog and T1/PRI W/Gateway
- Analog Phones W/Gateway
- Compatible with most any SIP VoIP Phone Much More...



COUNTERPATH



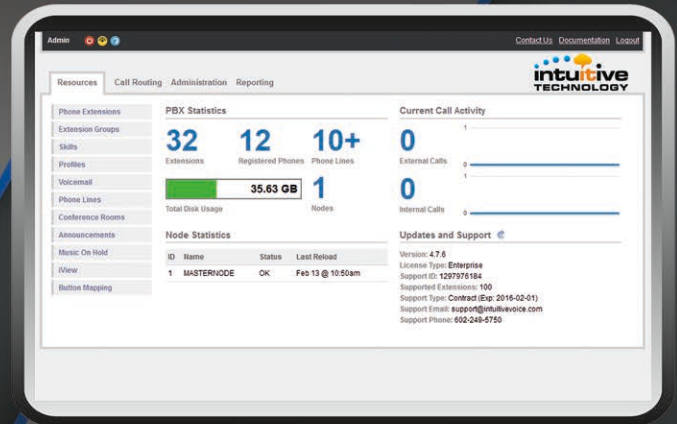
Compatible with the following major brands of phones



Designed to enable a small business to benefit from the recent wave of telephony enhancements, Evolution UC packs features commonly available only in high end systems in a simplified easy to use package. The days of calling your telecommunications supplier to enable another extension on your phone system are gone. With Evolution UC you simply plug your phone into a standard network jack and let the system do the rest. All the configuration is done through an easy to use web interface.

APPLIANCE PACKAGE CONTENTS

Evolution UC Server, Power Supply, Wall Mount Bracket, Tower Platform, Quick Start Guide, Complete Feature Guide, Evolution UC Professional License (Upgradable)



OPERATOR CONSOLE

Extension State Information, Drag and Drop Routing, Extension Search, Transfer to Phone or Voice Mail, Chat, View Queues, View Parking Lot
 ***Additional license allows expanded feature set

